

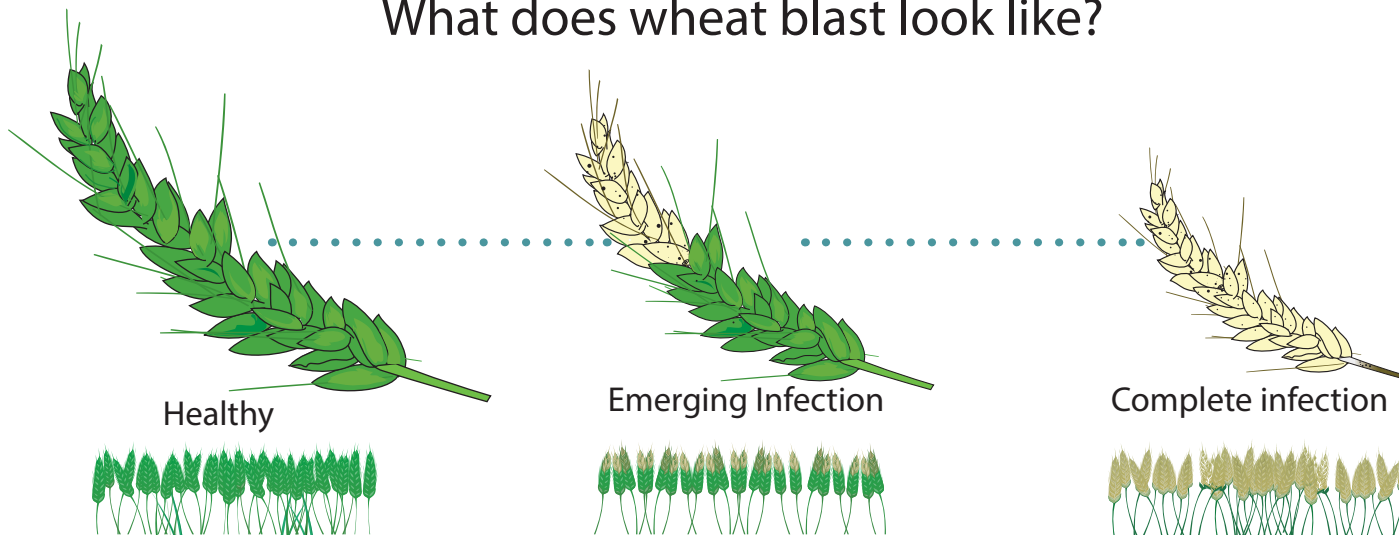
What is wheat blast disease? How can I manage it?



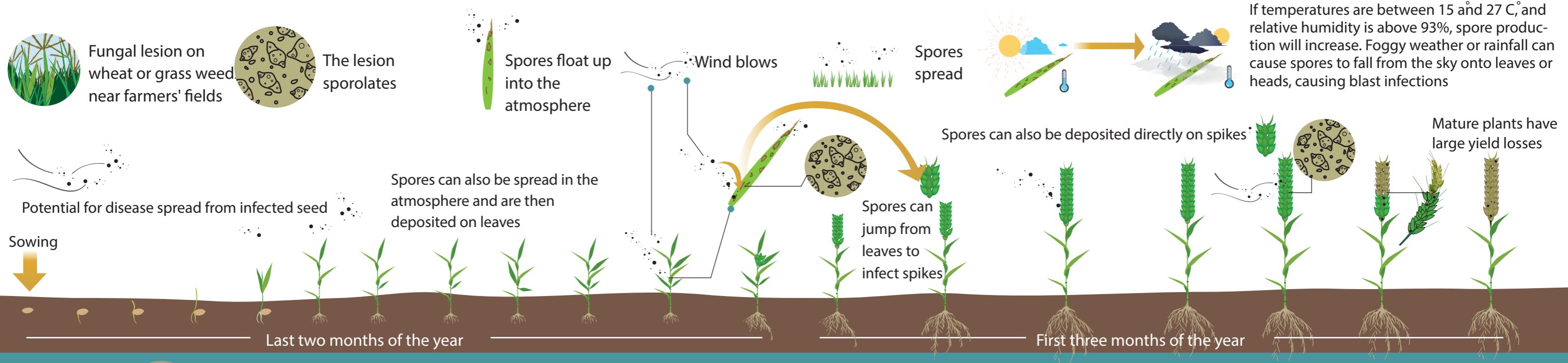
(*Magnaporthe oryzae* pathotype triticum)

is a devastating fungal disease that can significantly reduce wheat productivity in South Asia

What does wheat blast look like?



How does blast disease infect wheat crops?



What can I do about wheat blast?

Cultural practices to provide a measure of protection against blast



Crop rotation



Use disease free seed of resistant varieties



Sow early



Spray fungicides if advised by extension services



Remove grassy weeds



Do not replant seeds from a disease infected field



100 MILLION TONNES

of wheat consumed each year in South Asia by

300 MILLION undernourished people

FIRST OUTBREAK OF WHEAT BLAST

in Bangladesh was in February 2016

average yield loss was

25 - 30%



AFFECTED 15,000 HECTARES



SCIENTISTS REMAIN CONCERNED THAT WHEAT BLAST COULD SPREAD ACROSS SOUTH ASIA

Researchers with the Cereal Systems Initiative for South Asia (CSISA) are working towards solutions to mitigate the threat of wheat blast for smallholder farmers

Funded by



BILL & MELINDA GATES foundation



www.CSISA.org

Partners



International Maize and Wheat Improvement Center (CIMMYT)
House 10/B. Road 53.
Gulshan-2. Dhaka, 1213,
Bangladesh